

Corners to be Indexed

W1/4 COR. SEC. 35-107-40  
E1/4 COR. SEC. 34-107-40  
SW COR. SEC. 34-107-40  
NE COR. SEC. 3-106-40

**JAN 24 2022**

*Karen Brown*

I hereby certify that this document and the data contained herein was prepared by me or under my direct supervision.

*[Signature]*

Daniel L. Bueltel

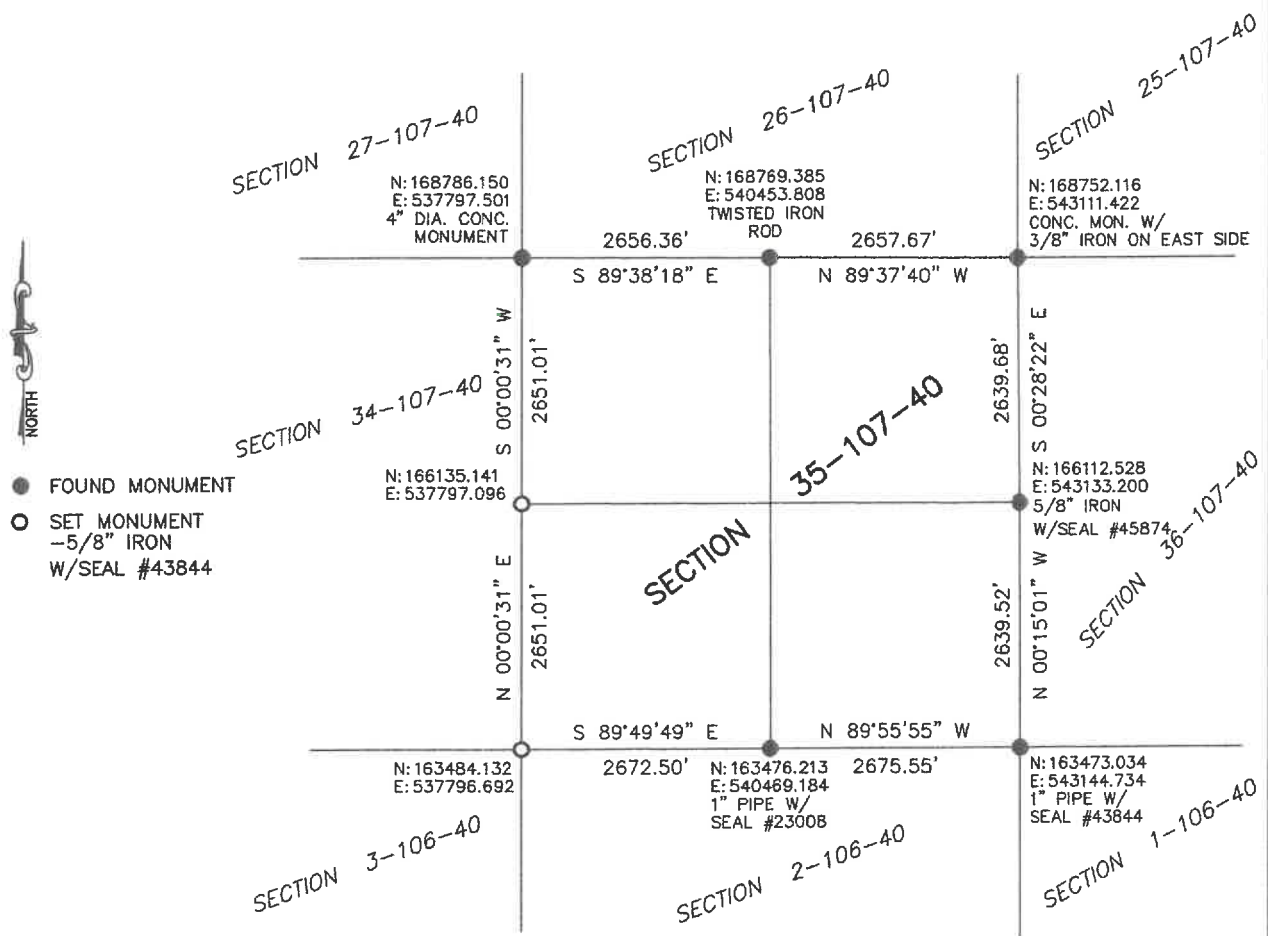
License No. 43844

1/19/2022  
Date

## CERTIFICATE OF LOCATION OF GOVERNMENT CORNER

Land survey monuments situated in Section 35, Township 107, Range 40, 5TH P.M.

STATE OF MINNESOTA, County of MURRAY



Murray County Coordinate System (1996 Adj.)

Statement of Evidence: SECTION 35-107-40

W1/4 COR. SEC. 35-107-40 (E1/4 COR. 34-107-40)

On June 21, 2021 Bueltel-Moseng Land Surveying set a 5/8" iron with seal #43844 midway and online between section corners.

SW COR. SEC. 35-107-40 (NE COR. 3-106-40)

On November 17, 1910, an 18" grey stone was set at the corner.

On June 21, 2021 Bueltel-Moseng Land Surveying found spike, recorded the position, removed and dug with a backhoe in the center of the road and found nothing. Set a 5/8" iron with seal #43844 in the location of the found spike.

N1/4 COR. SEC. 35-107-40

May 20, 1980, Murray County Highway Department found a concrete monument and placed a steel pin over top.

October 23, 1998, Zieske Land Surveying found a 5/8" spiral iron stake.

June 21, 2021, Bueltel-Moseng Land Surveying found 5/8" twisted iron rod.